

# Capital Asset Advisory Committee 2018 Capital Improvement Program Financial Status as of August 15, 2021

August 19, 2021

# 2018 CAPITAL IMPROVEMENT PROGRAM – FINANCIAL STATUS 8/15/2021

## Forecasted Revenue

### First Issuance

\$	326,490,000	Bond Issuance
\$	50,165,349	Premium on First Bond Issuance
\$	(1,655,349)	Issuance Costs
\$	11,775,932	Interest Through June 2021, net of bank fees
<hr/>		
\$	<b>386,775,932</b>	

### Second Issuance

\$	240,510,000	Bond Issuance
\$	68,309,148	Premium on First Bond Issuance
\$	(1,293,367)	Issuance Costs
\$	88,557	Interest Through June 2021, net of bank fees
<hr/>		
\$	<b>307,614,338</b>	

### Capital Transfer

\$	72,253,663	FY 2019, 2020, 2021 & 2022 Transfers from General Fund less COP Principal & Interest
\$	62,701,443	Forecasted FY 2023, 2024, 2025 Transfers from General Fund Less COP Principal & Interest
<hr/>		
\$	<b>134,955,106</b>	

TBD                      Future Interest Earnings

---

**\$ 829,345,376**      Preliminary Revenue

# 2018 CAPITAL IMPROVEMENT PROGRAM – FINANCIAL STATUS 8/15/2021

## Expenditures

As of August 15, 2021

As of July 15, 2021

\$	345,134,131	All expenditures to date, first issuance
\$	34,154,091	All expenditures to date - second issuance
\$	<b>379,288,222</b>	<b>Total Expenditures</b>

**\$351,782,307** Total Expended - All projects

\$	34,649,483	All encumbrances, first issuance
\$	50,827,317	All encumbrances, second issuance
\$	<b>85,476,800</b>	<b>Total Encumbrances</b>

**\$107,781,291** Total Encumbered - All projects

First issuance: 87% of bond proceeds spent (net of retainage)

Second issuance: 16% of bond proceeds spent (net of retainage)

## Charter

\$	48,633,629	Total Expended - Charter
\$	1,624,948	Total Encumbered - Charter

**\$46,940,654** Total Expended - Charter

**\$2,051,800** Total Encumbered - Charter

# 2018 CAPITAL IMPROVEMENT PROGRAM – FINANCIAL STATUS 8/15/2021

## Work in Progress & Completion Dates

		Events	
Alameda Addition / Renovation	8/22	Artificial Turf & Tracks @ 4 HS	9/21
Pomona HS Addition/Renovation	8/22	29 Efficiency & Future Ready	8/21
Marshdale ES Replacement	8/22	LED Replacement Phase II 11 Sites	9/21
D'Evelyn ES Addition / Renovation	8/22	7 Playgrounds, 5 Paving Projects	8/21
Columbine HS Aux Gym, Exterior Entry	8/21	8/20 3 Roofing Projects	8/21
Conifer HS Aux Gym	5/21	8/16	
Green Mountain HS Aux Gym	7/21		
Jefferson Jr./Sr. HS Addition / Renovation	8/21	TBD	
Kendrick Lakes ES Replacement	8/21		
Bell MS Addition	8/21	9/1	
Manning School Addition	8/21	TBD	
Parmalee ES Addition / Renovation	8/21	TBD	
Foster ES Addition / Renovation	8/21	TBD	
Warren Tech South	8/21	9/24	
Wayne Carle MS Addition	8/21	8/25	
Lumberg ES Addition / Renovation	8/21	TBD	



# 2018 CAPITAL IMPROVEMENT PROGRAM – FINANCIAL STATUS 8/15/2021

## In Design

Powderhorn Addition/Renovation	Bid 6/15	\$ 4,690,000	
Prospect Valley ES Replacement	Bid 6/25	\$17,664,000	
Standley Lake HS Addition/Renovation	Bid 7/15	\$ 6,427,300	
Evergreen MS Renovation	Bid 7/29	\$ 5,347,900	
Evergreen HS Renovation	GMP 8/15	\$ 8,215,738	
Jeffco Open School Addition/Renovation	Bid 8/26		
Ralston Valley HS Addition/Renovation	Bid 9/9		
Furniture, Fixtures & Equipment (FF&E) Sites			
Include: Conifer HS Library, Green Mtn. ES, Sheridan Green ES, Kyffin ES, Lasley ES, Lumberg ES, Dennison ES, Manning School, WTOC-South, Everitte MS, Jefferson HS, Pomona HS, Alameda Intl. Jr./Sr. HS, Fremont ES			Various

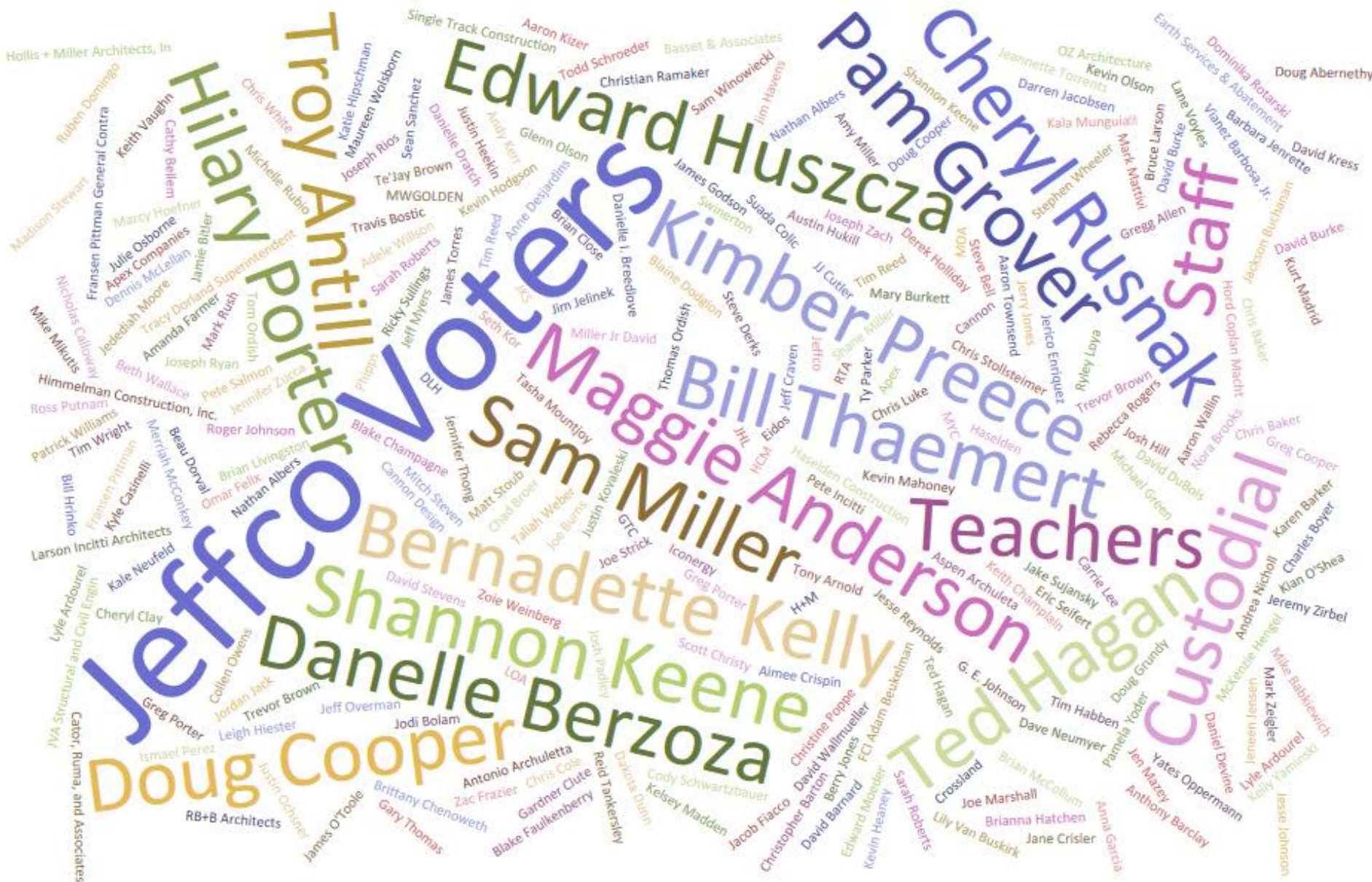


# CAAC Design and Construction Update

8-18-2021







# COLORADO ASPHALT SHORTAGE 2021



NEWS WEATHER SPORTS HEALTH VIDEO MORE

CBS Denver  
WATCH NOW

Businesses May Ban  
Unvaccinated Customers

71° Q

## CDOT Pushes Back I-70 Westbound Closure Through Central 70 Project Due To Oil Shortage

By Justin Adams July 18, 2021 at 11:59 pm Filed Under: Central 70 Project, Colorado Department of Transportation, Colorado News, Denver News, I-70, I-70 Closure, I-70 Traffic

FOX 31 2 NEWS

WATCH LIVE

NEWS

WEATHER

TRAFFIC

SPORTS

CO BEST

DEALS

CONTESTS

LOCAL NEWS

## Asphalt shortage impacts road construction as oil production slows



9NEWS

News

Weather

Sports

Connect

Watch

COVID-19 VACCINE

CORONAVIRUS

VOICES OF CHANGE

NEXT

TRAFFIC

## Summer construction could extend to fall due to asphalt shortages

It could be August or September before some projects are able to resume, according to the county public works department.

He said the department has faced asphalt shortages before, but this is the largest that's occurred in the middle of the construction season in recent years.

**JEFFCO**  
PUBLIC SCHOOLS



# COLORADO ASPHALT SHORTAGE 2021





# COLORADO ASPHALT SHORTAGE 2021





# COLORADO ASPHALT SHORTAGE 2021



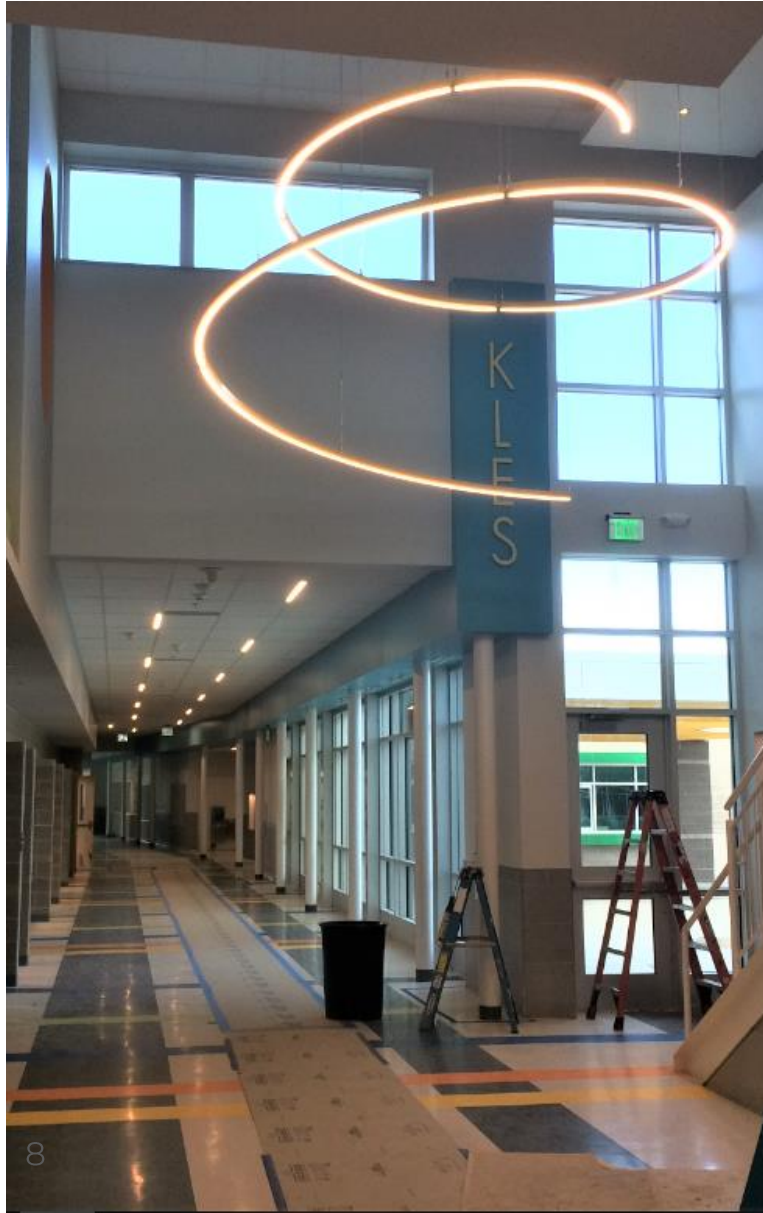
# 2021 Projects

## New Buildings & Additions



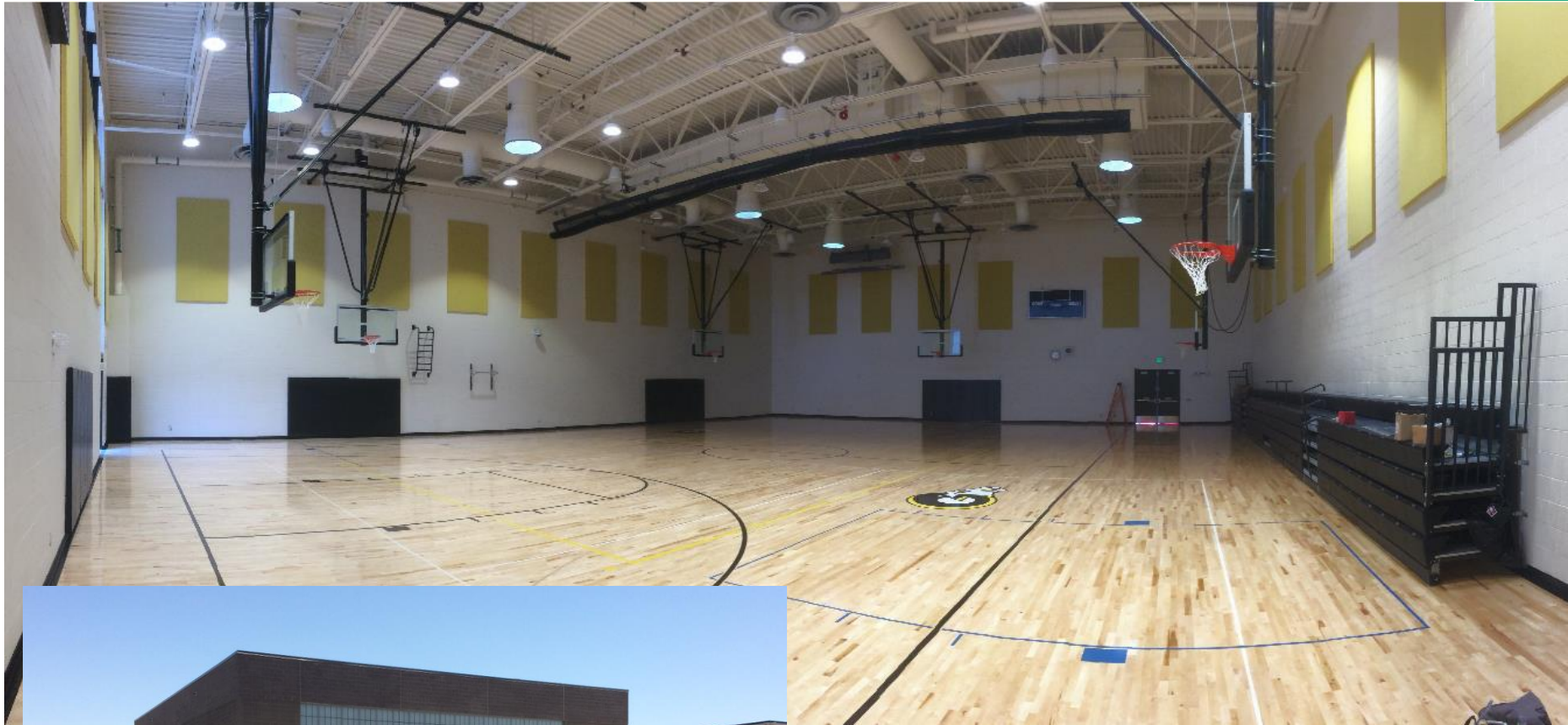
# Kendrick Lakes ES

## Larson Incitti – GC Roche



# Green Mountain HS – Aux Addition

## MOA – CMGC GE Johnson





# Warren Tech South – New Building

## HCM – GC JHL

Warren Tech South  
Ribbon Cutting  
9/24



# Conifer HS – Aux Gym Addition Cannon – CMGC FCI

Conifer HS Ribbon Cutting  
was 8/16





# Columbine HS – Aux Gym Addition

## EIDOS – CMGC Swinerton

Columbine Ribbon Cutting  
8/20



# Columbine HS – Aux Gym Addition EIDOS – CMGC Swinerton

Columbine Ribbon Cutting  
8/20





# Bell MS – 1 Story, 4 Classroom Addition Eidos – GC Golden Triangle

Bell MS Ribbon Cutting  
9/1



# Bell MS – 1 Story, 4 Classroom Addition Eidos – GC Golden Triangle

Bell MS Ribbon Cutting  
9/1





# Wayne Carle – 2 Story – 8 Classroom Addition RB+B – GC Basset

Wayne Carle Ribbon Cutting  
8/25



# Wayne Carle – 2 Story – 8 Classroom Addition RB+B – GC Basset

Wayne Carle Ribbon Cutting  
8/25



# Wayne Carle – 2 Story – 8 Classroom Addition RB+B – GC Basset

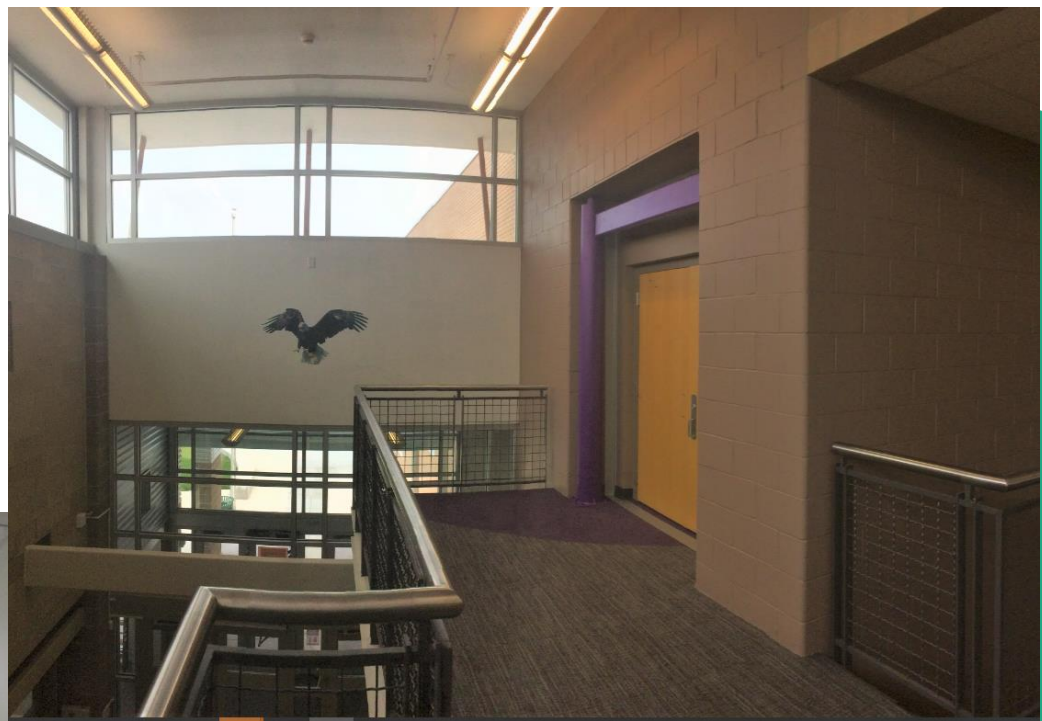
Wayne Carle Ribbon Cutting  
8/25





# Wayne Carle – 2 Story – 8 Classroom Addition RB+B – GC Basset

Wayne Carle Ribbon Cutting  
8/25



# Jefferson HS – Aux Gym Addition

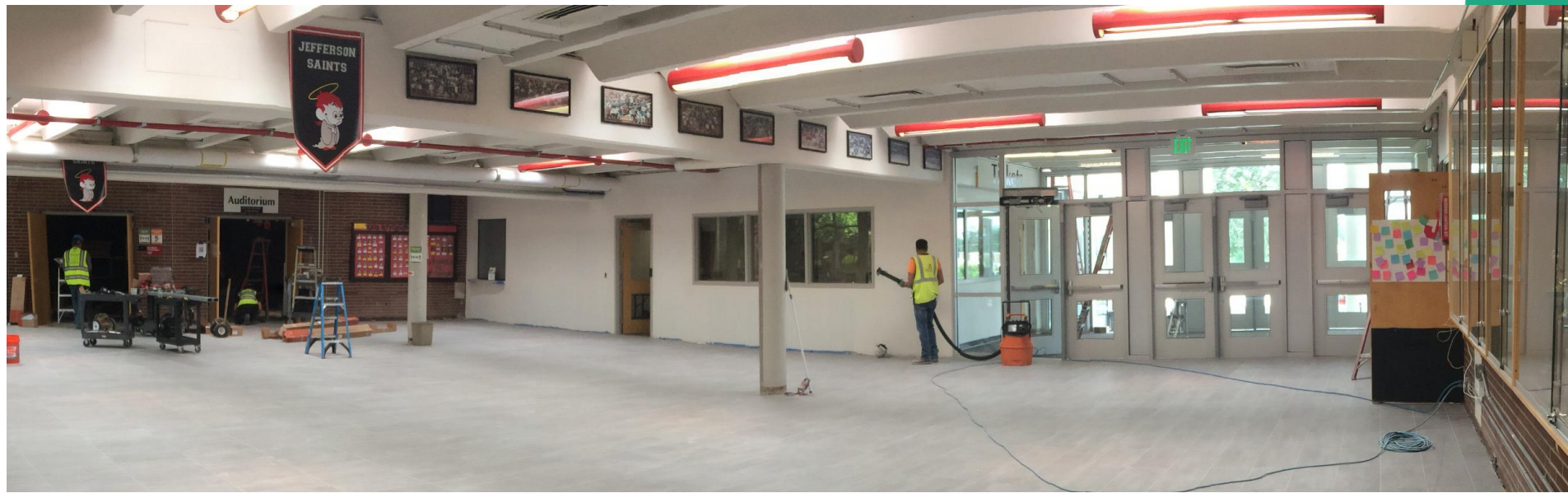
## MOA – CMGC Haselden





# Jefferson HS – Aux Gym Addition

## MOA – CMGC Haselden



# Manning Opt – 1 Story – 7 Classroom Addition AMD – GC Fransen Pittman





# Manning Opt – 1 Story – 7 Classroom Addition AMD – GC Fransen Pittman





# Lumberg ES – 4 CR Addition MOA – CMGC Haselden



# Lumberg ES – 4 CR Addition MOA – CMGC Haselden





# Parmalee ES – 1 Story – 6 Classroom Addition OZ – GC Saunders





# Parmalee ES – 1 Story – 6 Classroom Addition OZ – GC Saunders





# Parmalee ES – 1 Story – 6 Classroom Addition OZ – GC Saunders





# Parmalee ES – 1 Story – 6 Classroom Addition OZ – GC Saunders





Parmalee ES – 1 Story –  
6 Classroom Addition  
OZ – GC Saunders





# Alameda HS – Addition WOLD – CMGC Phipps

## Construction Float Report





# Alameda HS – Addition WOLD – CMGC Phipps

## Construction Float Report



# Alameda HS – Addition WOLD – CMGC Phipps

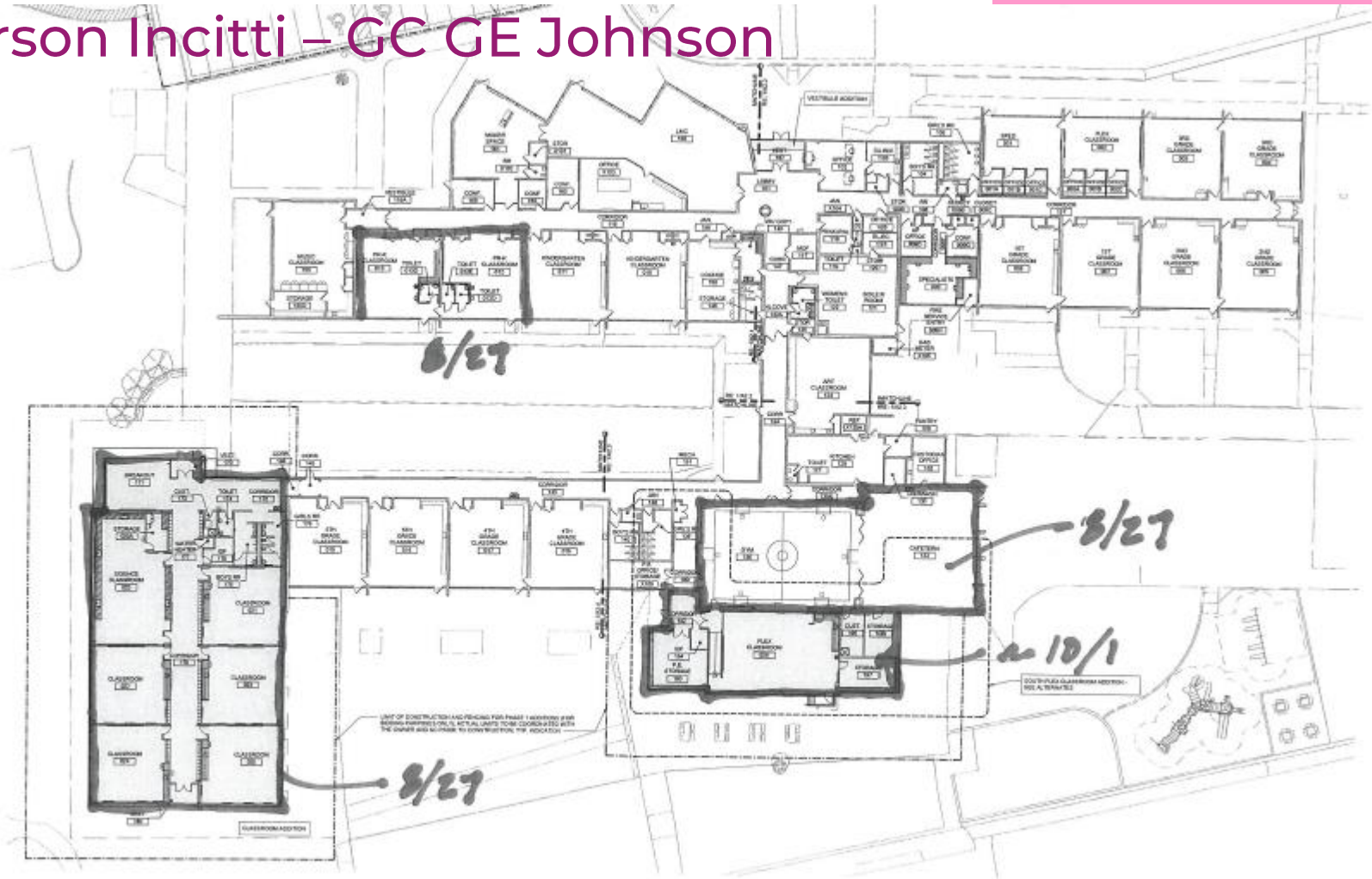
## Construction Float Report





# Foster ES – 1 Story – 7 Classroom Addition Larson Incitti – GC GE Johnson

## Construction Float Report



# Foster ES – 1 Story – 7 Classroom Addition Larson Incitti – GC GE Johnson

## Construction Float Report





# Foster ES – 1 Story – 7 Classroom Addition Larson Incitti – GC GE Johnson

## Construction Float Report



Foster ES – 1 Story –  
7 Classroom Addition  
Larson Incitti – GC GE Johnson

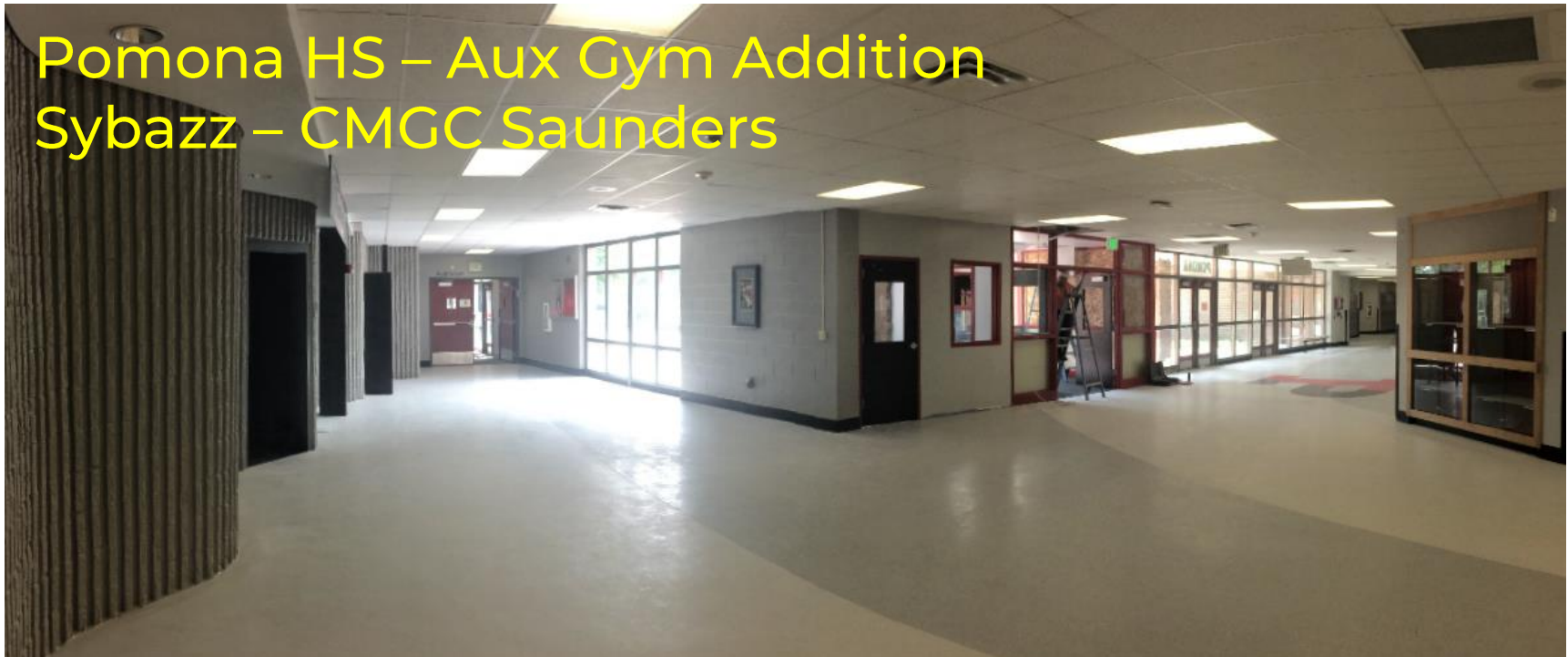
Construction  
Float Report





# Pomona HS – Aux Gym Addition

## Sybazz – CMGC Saunders



# Pomona HS – Aux Gym Addition

## Sybazz – CMGC Saunders





# Marshdale ES - Replacement HCM – GC GH Phipps





# D'Evelyn – 8 CR Addition

## HCM – GC Himmelman





# 2021 Efficiency Future Ready & DW projects

# Golden HS – Door Replacement EUA – GC MW Golden





# Brady - Efficiency Future Ready Alan Ford – GC Himmelman

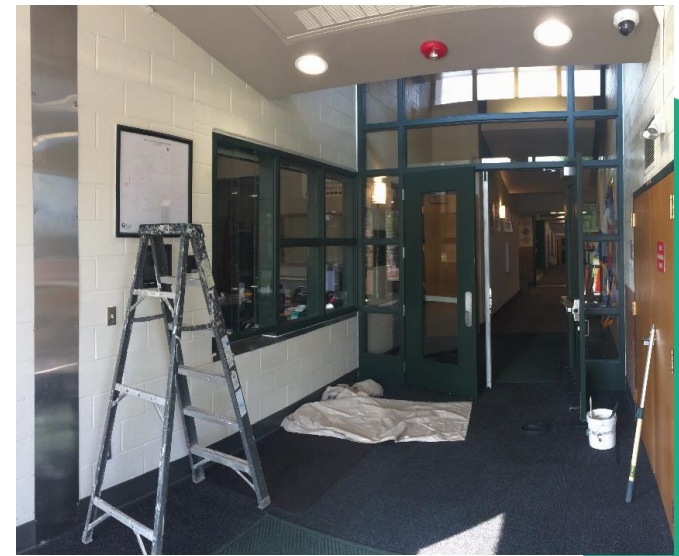
## Construction Float Report



# Maple Grove ES

## Efficiency Future Ready

### RTA – GC Golden Triangle





# Kyffin ES

## Efficiency Future Ready

### Eidos – GC GH Phipps



Kyffin ES  
Efficiency Future Ready  
Eidos – GC GH Phipps





# Fitzmorris ES

## Efficiency Future Ready

### Eidos – GC Himmelman



# Lawrence ES Efficiency Future Ready Eidos – GC Bryan Construction (JCI)





Lawrence ES  
Efficiency Future Ready  
Eidos – GC Bryan Construction (JCI)



# Deane ES

## Efficiency Future Ready

### LOA – GC GH Phipps





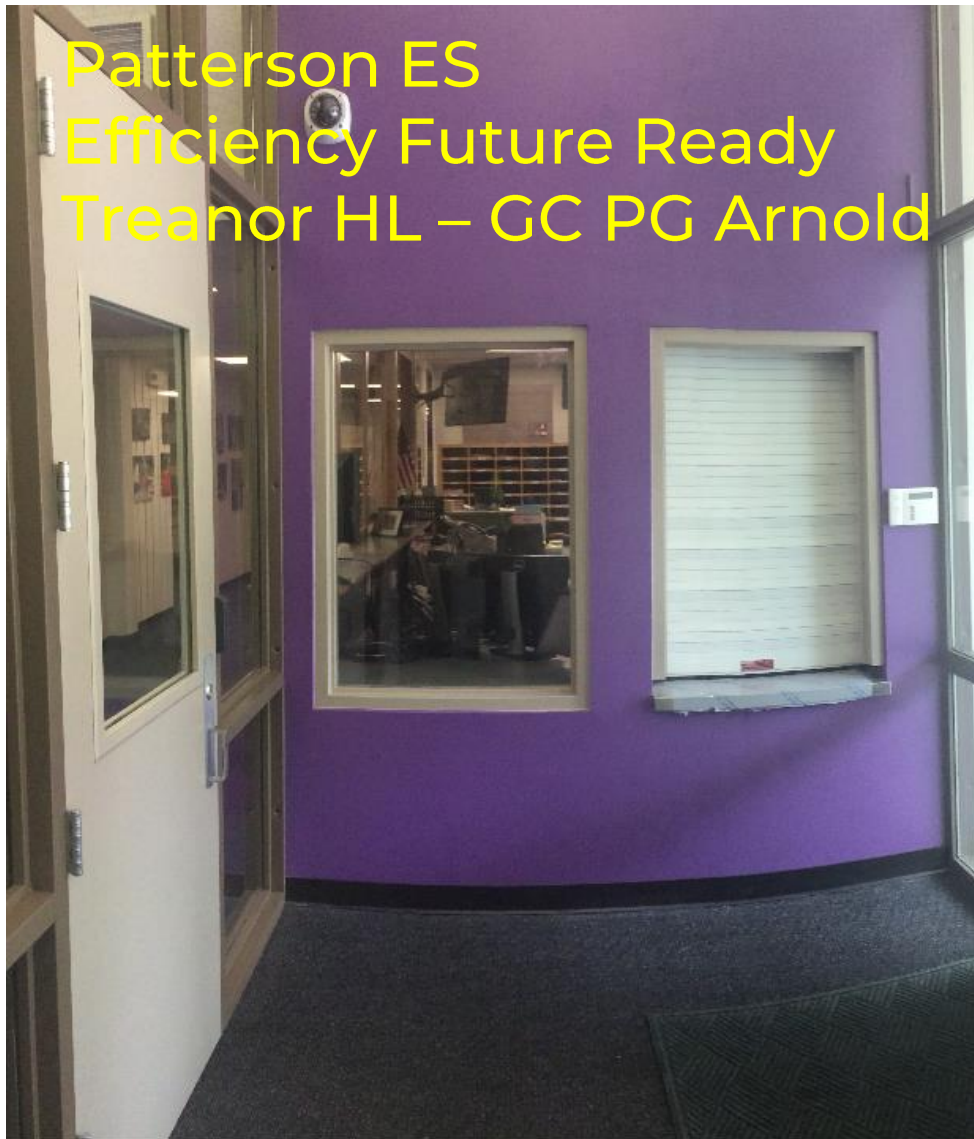
# Lasley ES

## Efficiency Future Ready

### Treanor HL – GC PG Arnold



# Patterson ES Efficiency Future Ready Treasor HL – GC PG Arnold





# Patterson Cottages

## Efficiency Future Ready

### Treanor HL – GC PG Arnold





# Dennison ES

## Efficiency Future Ready

### Hollis & Miller- GC MW Golden





# Miller Special School Efficiency Future Ready Larson Incitti –GC Himmelman



# Miller Special School Efficiency Future Ready Larson Incitti –GC Himmelman





Kullerstrand ES  
Efficiency Future Ready  
Larson Incitti – GC Himmelman  
Alt 2, 3 & 6



# Ryan ES

## Efficiency Future Ready

### RB+B – GC PG Arnold





Ryan ES  
Efficiency Future Ready  
RB+B – GC PG Arnold





# Sheridan Green ES

## Efficiency Future Ready

### RB+B – GC Himmelman





# Sheridan Green ES

## Efficiency Future Ready

### RB+B – GC Himmelman





# Vanderhoof ES

## Efficiency Future Ready

### EUA – GC MW Golden





# Vanderhoof ES

## Efficiency Future Ready

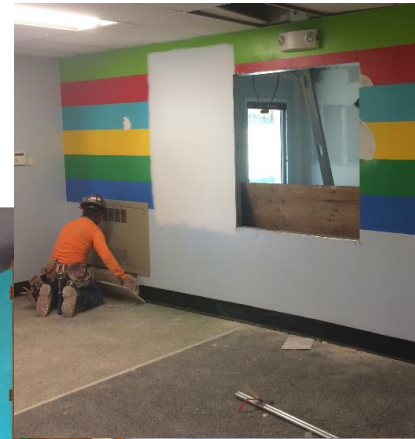
### EUA – GC MW Golden



# Stott ES

## Efficiency Future Ready

### EUA – GC Himmelman





Devinny ES  
Efficiency Future Ready  
DLH – GC Crossland Construction





# Devinny ES

## Efficiency Future Ready

### DLH – GC Crossland Construction





# Carmody MS Alt A1 & A4

## Efficiency Future Ready

### DLH –GC Mark Young



# Westridge ES

## Efficiency Future Ready

### OZ – GC Single Track





# Westridge ES Efficiency Future Ready OZ – GC Single Track



Everitt MS  
Efficiency Future Ready  
OZ - Bassett





Everitt MS  
Efficiency Future Ready  
OZ - Bassett



# Chatfield HS

## Efficiency Future Ready

### Cannon - Haselden





# Dakota Ridge HS Efficiency Future Ready Cannon - Haselden





# Dakota Ridge HS Efficiency Future Ready Cannon - Haselden





# DW Security Glass Installation

## 12 - Schools

Creighton MS      Rose Stein 25%

Red Rocks ES      Mandalay MS

Weber ES      Moore MS

Meiklejohn ES      Drake MS

Ken Caryl MS      Dutch

Leawood ES      Conifer HS



# DW Tracks & Turf Fields

## HCM – CMGC Saunders





# DW Tracks & Turf Fields

## HCM – CMGC Saunders



# DW Roofing

D'Evelyn Opt - SR-DK – Arapahoe -  
Fitzmorris ES - SR-DK – Arapahoe –  
Lawrence ES-SR-DK-United Materials

Fitzmorris



Lawrence





# DW Roofing

Emory ES - WJE - Powers

Westgate ES - WJE - United Materials

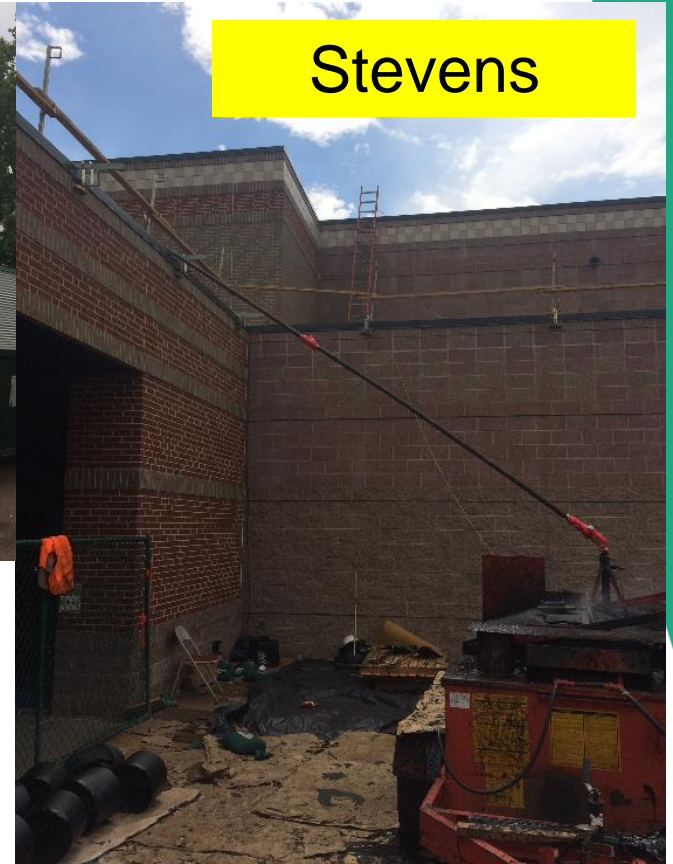
Stevens ES - WJE - Douglass



Emory



Westgate

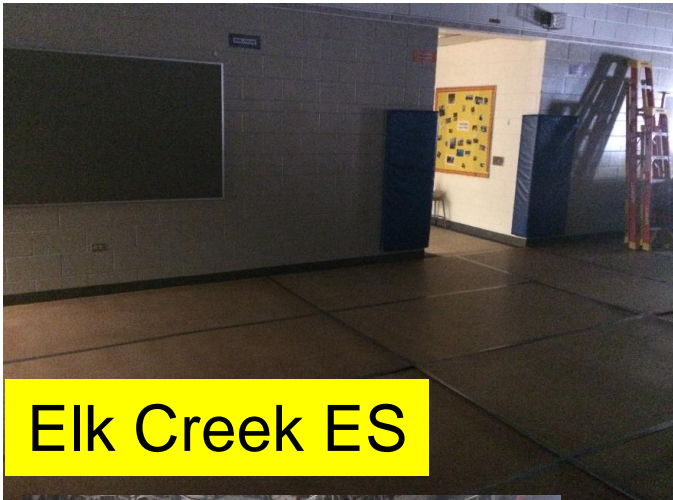


Stevens

# DW Mechanical – 5 Schools

Elk Creek ES, Edgewater ES, Peck ES, Secrest ES, Thomson ES

## Columbine – US Engineering



Elk Creek ES



Peck



Edgewater



Secrest ES



Thomson



# DW LED 2021 – Ackerman – CMGC McKinstry



1. 11/8 Edgewater ES
2. 10/11 Elk Creek ES
3. 11/8 Emory ES
4. 9/6 Kyffin ES
5. 11/8 Red Rocks ES
6. 8/23 Shaffer ES
7. 9/27 Stevens ES
8. 8/23 Stony Creek ES
9. 9/6 Thomson ES
10. 9/27 Warder ES
11. 10/11 West Jefferson ES

DW – Paving  
West Jefferson ES  
Red Rocks ES  
Parmalee ES  
JVA – Concrete Express

West Jefferson ES



Parmalee ES



Red Rocks ES



# DW – Playgrounds I – Group A

## Kyffin ES, Red Rocks ES, Peck ES

### Design Concepts – T2





DW – Playgrounds I – Group B  
Warder ES, Secrest ES,  
Thomson ES  
Design Concepts – T2



Secrest ES



Thomson



Warder ES



# DW – Playgrounds – Normandy ES

## Lime Green – Arrow J





# DW – Playgrounds – Shaffer ES

## Lime Green – Arrow J





DW – Playgrounds –  
Elk Creek ES  
Lime Green – Arrow J





# DW – Flooring – Peck Intergroup – PG Arnold





# DW – Flooring – Emory Intergroup – PG Arnold



# DW – Flooring – Red Rocks Intergroup – PG Arnold





# DW – Flooring – Shaffer Intergroup – PG Arnold

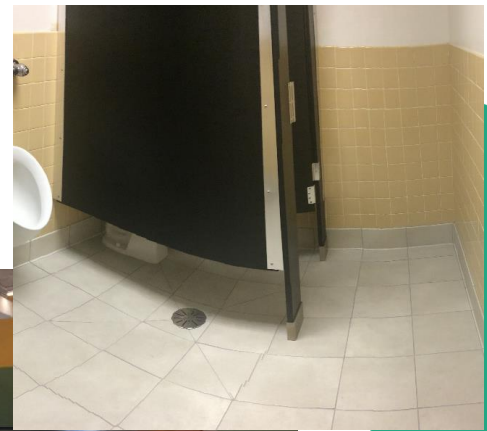


# DW – Flooring – Shaffer Intergroup – PG Arnold





# DW – Flooring – Westgate Intergroup – PG Arnold



# 2022 Projects

## New Buildings & Additions



# Powderhorn ES - Addition Hollis & Miller – Himmelman



## Construction

Base Bid  
\$4,690,000

Budget  
\$4,470,623

4.7% Over  
Budget  
\$219,377

# Prospect Valley ES - Replacement MOA – GH Phipps



## Construction

Base Bid  
\$17,598,000  
+ Alt 8  
\$66,000

Budget  
\$16,959,186

4.2% Over  
Budget  
\$704,814





# Standley Lake HS - Addition Cannon – FCI Constructors



## Construction

Base Bid  
\$5,293,000  
+ Alternates  
\$1,134,300

Budget  
\$6,456,000

Under  
Budget  
\$28,700

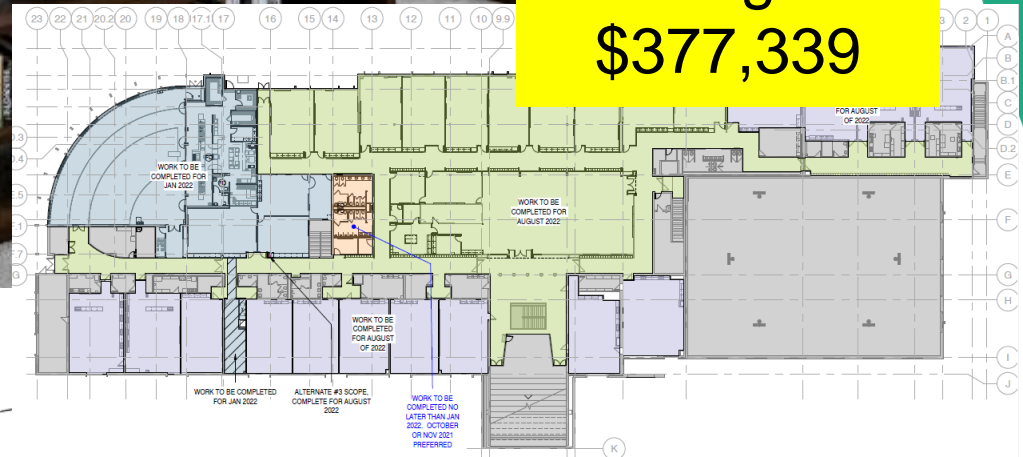
# Evergreen MS Efficiency & Future Ready AMD – Haselden

## Construction

Base Bid  
\$5,169,000  
+ Alternates  
\$178,900

Budget  
\$5,725,239

Under  
Budget  
\$377,339





Evergreen HS  
Efficiency Future Ready  
DLR – CMGC JHL

Construction

GMP

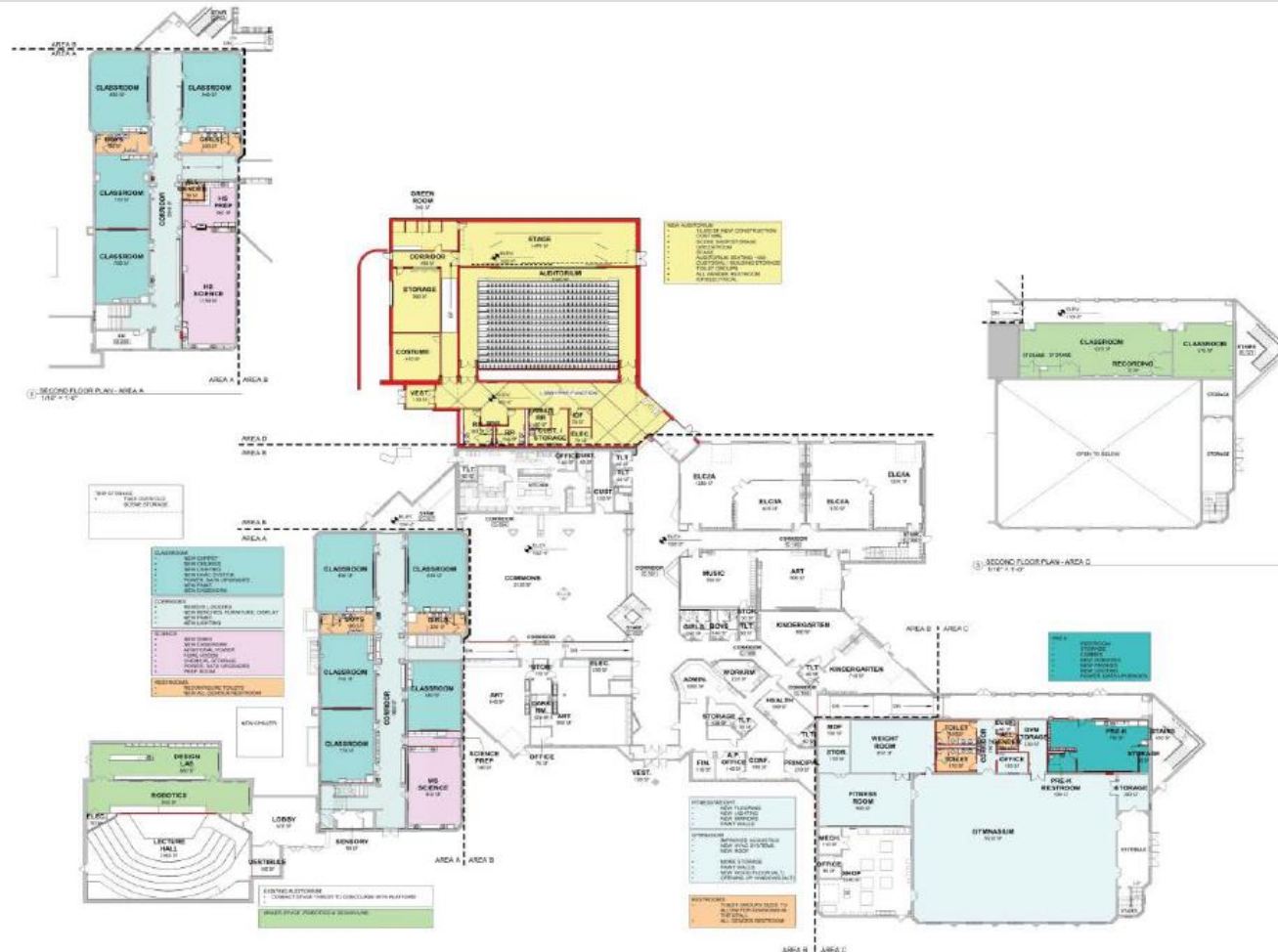
\$8,215,738

On Budget



# Jeffco Open - Addition HCM - TBD

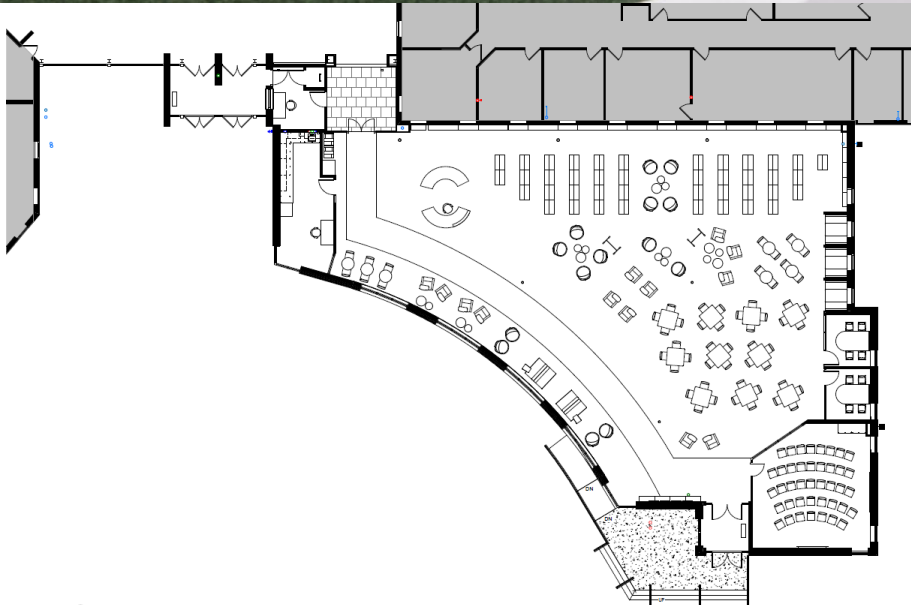
Bids  
8/26/2021





# Ralston Valley HS - Addition EUA - TBD

Bids  
9/9/2021



# 2022

## 44 - Efficiency Future Ready & DW projects



## 2022 Projects

Location	Articulation	Sched	Type	Description	A/E	Project Manager	Possible Replacement
Mortensen	Chatfield	9/1/21	ES	Efficiency & Future Ready	OZ	Bernadette Kelly	
Shaffer	Chatfield	9/1/21	ES	Efficiency & Future Ready	OZ	Bernadette Kelly	
Stony Creek	Chatfield	9/1/21	ES	Efficiency & Future Ready	OZ	Bernadette Kelly	
DW Playground 2022-I	JDW	9/1/21	DW	4 Schools - Peiffer, Governor's Ranch, Mt. Carbon, Glennon Heights	Design Concepts / Lime Green	Bernadette Kelly	
DW Playground 2022-II	JDW	9/1/21	DW	3 Schools - Campbell, Swanson, Fairmount	Design Concepts / Lime Green	Bernadette Kelly	
DW LED Lighting 2022	JDW	9/1/21	DW	13 Schools - Lawrence, Brady, Bradford North, Bradford South, Ute Meadows, Leawood, Normandy, Rooney Ranch, Creighton MS, Moore MS, Weber ES, Meiklejohn, West Woods	Ackerman	Bill Thaumert	
DW Paving 2022	JDW	9/1/21	DW	5 Schools - Campbell, Peiffer, S Lakewood, Little, Falcon Bluffs	JVA	Bill Thaumert	
Creighton MS	Lakewood	9/1/21	MS	Efficiency & Future Ready	Larson Incitti	Danelle Berzoza	Replaced Oberon
Peck	Arvada	9/1/21	ES	Efficiency & Future Ready	Larson Incitti	Danelle Berzoza	
Secrest	Arvada	9/1/21	ES	Efficiency & Future Ready	Larson Incitti	Danelle Berzoza	
DW Elevator Upgrades 2022	JDW	9/1/21	DW	Elevator Upgrades 2022	Kone	David Curnow	
DW Modular Bldg Removal 2022	JDW	9/1/21	DW	Modular Bldg Removal 2022	In House	David Curnow	
Long View HS	OPT	9/1/21	ES	Efficiency & Future Ready	RTA	Doug Cooper	
Shelton	Golden	9/1/21	ES	Efficiency & Future Ready	RTA	Doug Cooper	
Bear Creek High	Bear Creek	9/1/21	HS	Efficiency & Future Ready	MOA	Ed Huszcza	Replaced Edgewater
Blue Heron	Dakota Ridge	9/1/21	ES	Efficiency & Future Ready	MOA	Ed Huszcza	
Colorow	Dakota Ridge	9/1/21	es	Efficiency & Future Ready	MOA	Ed Huszcza	
Lakewood High	Lakewood	9/1/21	HS	Efficiency & Future Ready	HCM	Hilary Porter	Replaced Molholm
Mt Evans	OELS	9/1/21	OELS	Efficiency & Future Ready	HCM	Hilary Porter	
Windy Peak	OELS	9/1/21	OELS	Efficiency & Future Ready	HCM	Hilary Porter	
DW Mechanical 2022	JDW	9/1/21	DW	Campbell, Fairmount, Falcon bluffs MS, Little, Van Arsdale	Columbine Engineering	Kimber Preece	
North Arvada MS	Arvada	9/1/21	MS	Efficiency & Future Ready	Eidos	Maggie Anderson	
Slater Elementary	Lakewood	9/1/21	ES	Efficiency & Future Ready	Eidos	Maggie Anderson	
Wheat Ridge HS	Wheat Ridge	9/1/21	HS	Efficiency & Future Ready + Turf Replacement	Eidos	Maggie Anderson	
Wilmore Davis	Wheat Ridge	9/1/21	ES	Efficiency & Future Ready	Eidos	Maggie Anderson	

## 2022 Projects

Location	Articulation	Sched	Type	Description	A/E		Project Manager	Possible Replacement
Emory	Alameda	9/1/21	ES	Efficiency & Future Ready	Treanor HL		Pam Grover	
Red Rocks	Bear Creek	9/1/21	ES	Efficiency & Future Ready	Treanor HL		Pam Grover	
Westgate	Bear Creek	9/1/21	ES	Efficiency & Future Ready	Treanor HL		Pam Grover	
DW Flooring 2022-II	JDW	9/1/21	DW	7 Schools - Swanson, Glennon Heights, S Lakewood, Little, Parr, Van Arsdale, Pennington	Treanor HL		Pam Grover	
Awest HS	Awest	9/1/21	HS	Efficiency & Future Ready	LOA		Sam Miller	
Mandalay	Standley Lake	9/1/21	ES	Efficiency & Future Ready	RB+B		Sam Miller	
Warder	Pomona	9/1/21	ES	Efficiency & Future Ready	RB+B		Sam Miller	
Warren OTC North	Awest	9/1/21	OTC	Efficiency & Future Ready	LOA		Sam Miller	
Bergan Valley	Evergreen	9/1/21	ES	Efficiency & Future Ready	H&M / BVH / EUA		Ted Hagan	
Elk Creek	Conifer	9/1/21	ES	Efficiency & Future Ready	H&M / BVH / EUA		Ted Hagan	
Golden High	Golden	9/1/21	HS	Efficiency & Future Ready	H&M / BVH / EUA		Ted Hagan	Replaced Bergan Meadow
Mitchell	Golden	9/1/21	ES	Efficiency & Future Ready	H&M / BVH / EUA		Ted Hagan	
West Jeff	Conifer	9/1/21	ES	Efficiency & Future Ready	H&M / BVH / EUA		Ted Hagan	
Green Mountain	Green Mtn	9/1/21	ES	Efficiency & Future Ready	Sybazz		Troy Antill	
Stevens WR 5-8	Wheat Ridge	9/1/21	ES	Efficiency & Future Ready	Sybazz		Troy Antill	
Thomson	Arvada	9/1/21	ES	Efficiency & Future Ready	Sybazz/ Intergroup		Troy Antill	
DW Flooring 2022-I	JDW	9/1/21	DW	7 Schools - Dear Creek MS, Falcon Bluffs MS, Summit Ridge MS, Peiffer, Governor's Ranch, Mt Carbon, Rooney Ranch	Sybazz		Troy Antill	
DW Roofing 2022	JDW	9/1/21	DW	5 schools - Summit Ridge MS, Campbell, Fairmount, S Lakewood, Little, Parr, Pennington	Cave, WJE, SRDK, Roof Tech		Troy Antill	
DW Security Glass 2022	JDW	9/1/21	DW	11 schools - Swanson, Awest, Campbell, Fairmount, BCK8, Summit Ridge MS, Glennon Heights, S Lakewood, Little, Parr, Pennington	In House		Troy Antill	



# Next Meeting 9/16/21